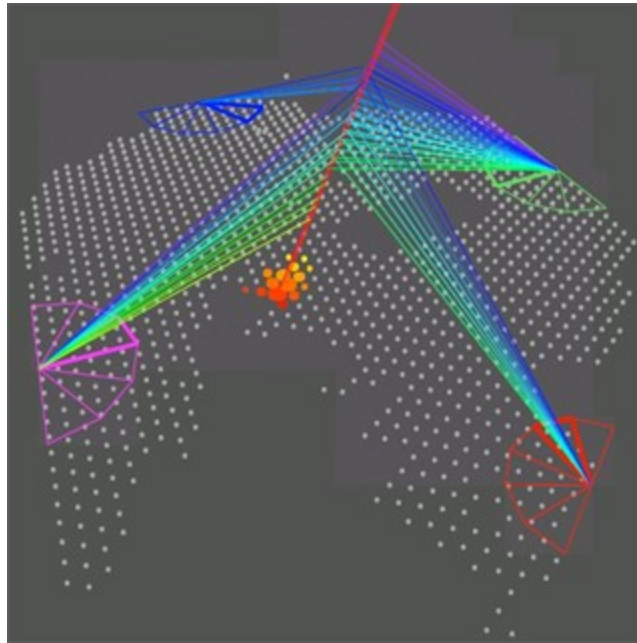


Wichita Science Cafe' Presents

# High-Energy Cosmic Rays: What Are They, and Where Do They Come From?



**Date: Monday, May 9, 2011**

**Time: 7:30 p.m.**

**Location: The Donut Whole,  
1720 E. Douglas, Wichita, KS**

**Speaker: Dr. Nickolas Solomey  
Prof. & Chair of Physics Wichita State University**

Dr. Nickolas Solomey will let you in on the latest about The Auger Experiment. It's a large cosmic ray experiment, the first half of which has been built in Argentina. The next phase of the experiment is to build a larger Northern array, possibly in Eastern Colorado and Western Kansas.

Dr. Solomey will talk about what cosmic rays are, compare a cosmic ray observatory to a traditional observatory, and explain why the Kansas-Colorado region is ideally suited for this new type of observatory that will look farther back in time than any optical telescope can.

More info: [info@sciencecafe-wichita.com](mailto:info@sciencecafe-wichita.com) • [www.sciencecafe-wichita.com](http://www.sciencecafe-wichita.com)

Read more about the Auger Experiment at <http://bit.ly/gtiKfJ>

Join Kansas Citizens For Science • [www.kcfs.org](http://www.kcfs.org)

Like our Facebook page! <http://bit.ly/9gUeoK>